

**TOGETHER WE CAN MAKE
A DIFFERENCE!**

- Do you receive or would like to receive services?
- Would you like to understand the system?
- Would you like to work the system to your advantage?
- Would you like to change the system?

Our FCC currently has vacant seats. We encourage all interested individuals to attend our monthly meetings. To be put on our mailing list or to learn more about Area 12 FCC, please return the following form:

I am a:

- Parent Self-Advocate
 Caregiver Professional
 Other Family Member Other

My Child is on:

- Medicaid Waiver Waitlist

***I am able to attend meetings during the:**

- Day Night

NAME: _____

ADDRESS: _____

PHONE: _____

EMAIL: _____

Topics that you would like to learn about: _____

***If you are unable to attend meetings but would like to participate in helping to make policy decisions, please log on to our website, www.fcc12.org, to join our Google Group or send email to: [Area-12-Florida-Care-Council @googlegroups.com](mailto:Area-12-Florida-Care-Council@googlegroups.com)**



Area 12 Family Care Council
210 North Palmetto Avenue Suite 312
Daytona Beach, Florida 32114

**Area 12 Family Care Council
210 North Palmetto Avenue Suite 312
Daytona Beach, Florida 32114**

**Family Care
Council**



**Area 12
Volusia & Flagler**

**Working to assist
individuals with
developmental
disabilities and
their families.**

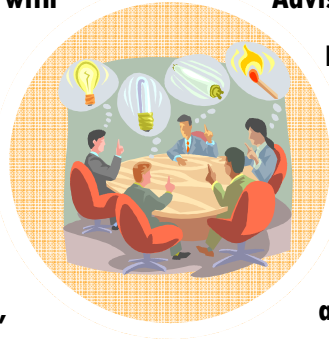
**210 North Palmetto Ave.
Suite 312
Daytona Beach, FL 32114**

(386) 947 - 4026 - APD office
(386) 445-1288—Phil, Palm Coast
(386) 736-9235 —Susan, Deland

www.fcc12.org

FLORIDA FAMILY CARE COUNCILS
www.FCCFlorida.org

Established in 1993, the Florida Care Councils (FCC) are partnered with their respective area Agency for Persons with Developmental Disabilities (APD) to which they serve as advocates. Members of the FCCs are volunteers and are comprised of up to 15 individuals with developmental disabilities, parents, siblings, and court-appointed guardians. New members are appointed by the Governor upon majority recommendation by their area FCC.



The primary functions of the FCCs are to: Assist in providing information and outreach to families; Advise the area APD administrators about policy issues concerning community and family support systems; Review the effectiveness of the area APD and make recommendations with respect to program implementation; and Meet and share information with other area FCCs. Since families are the primary care-givers, the FCC recognizes their role is vital in making decisions which ensure that their loved one will receive the care that is needed.

AREA 12 FAMILY CARE COUNCIL
www.fcc12.org

The Area 12 Family Care Council represents Volusia and Flagler Counties and assists persons with development disabilities and their families. The Area 12 FCC meets about once a month. Our Council hosts community forums for families on topics relevant to the population's needs. We

also conduct consumer needs and satisfactions surveys, publish newsletters, fact sheets and resource directories. Upon reviews of expenditures for respite and family care, recommendations are made to the APD regarding funds available for family care.

WE DO MAKE A DIFFERENCE

Developmental Disability

For the purpose of receiving services through the Agency for Persons With Disabilities, a developmental disability is defined by Florida statute Chapter 393 as:

- Mental Retardation
- Autism
- Cerebral Palsy
- Spina Bifida
- Prader-Willi Syndrome

* * * * *

A developmental disability results in a mental or physical disability that occurs before the age of eighteen and is likely to continue indefinitely resulting in substantial functional limitations in three or more of the following major life activities:

- Self-Care
- Receptive and Expressive Language
- Learning
- Mobility
- Self-Direction
- Capacity for Independent Living
- Economic Self-Sufficiency

Printed 2011